

# Daily Dossier

20 March 2019

## Outlook



The Nifty ended 0.10% down at 11,521.05. It opened positive, however, failing to breakout 11,560 led to end the session in negative. Ending the session with a hanging man candle implies indecision among traders. Hence, needless to say 11,560 may now continue to act as the immediate resistance. Downside supports are placed around 11,450 and 11,400.

On the Nifty hourly chart; down trending RSI implies intraday highs towards critical resistances may see selling pressure. However, ADX is still above twenty suggests uptrend is well intact. Hence buy-on-dips and sell-on-rise is the strategy to be followed.

Nifty patterns on multiple time frames suggest; it ended the day on indecisive note. 11,560 is the immediate critical resistance. chart pattern with position of leading indicators suggesting, The benchmark index may continue oscillating in the broader price band of 11,560 to 11,450.

**Nifty Crucial Supports & Resistances for tomorrow-**  
**Supports- 11450, 11400 Resistances- 11560, 11620**

### Open Positional Calls-

**Extended T+3 Positional Buy-**  
**Future Segment: BERGER PAINT Fut on dips @ 309, TGT- 317, SL- 305**

**T+3 Positional Sell-**  
**Future Segment: AURO PHARMA Fut @ 785, TGT- 755, SL- 800**

**T+2 Positional Buy-**  
**Cash Segment: Enginners India @ 118-117, TGT- 124, SL- 113.50**

**Extended BTST Positional Buy-**  
**Future Segment: BHARTI AIRTEL Fut @ 337, TGT- 347, SL- 332**

**T+2 Positional Buy-**  
**Future Segment: HAVELLS Fut @ 757, TGT- 775, SL- 748**

**Extended BTST Positional Buy-**  
**Future Segment: VOLTAS Fut @ 611, TGT- 625, SL- 604**

**T+3 Positional Buy-**  
**Cash Segment: PNB HOUSING Fut @ 860, TGT- 890, SL- below 845**

**Extended BTST Positional Buy-**  
**Future Segment: MC DOWELL-N Fut @ 578, TGT- 594, SL- 570**

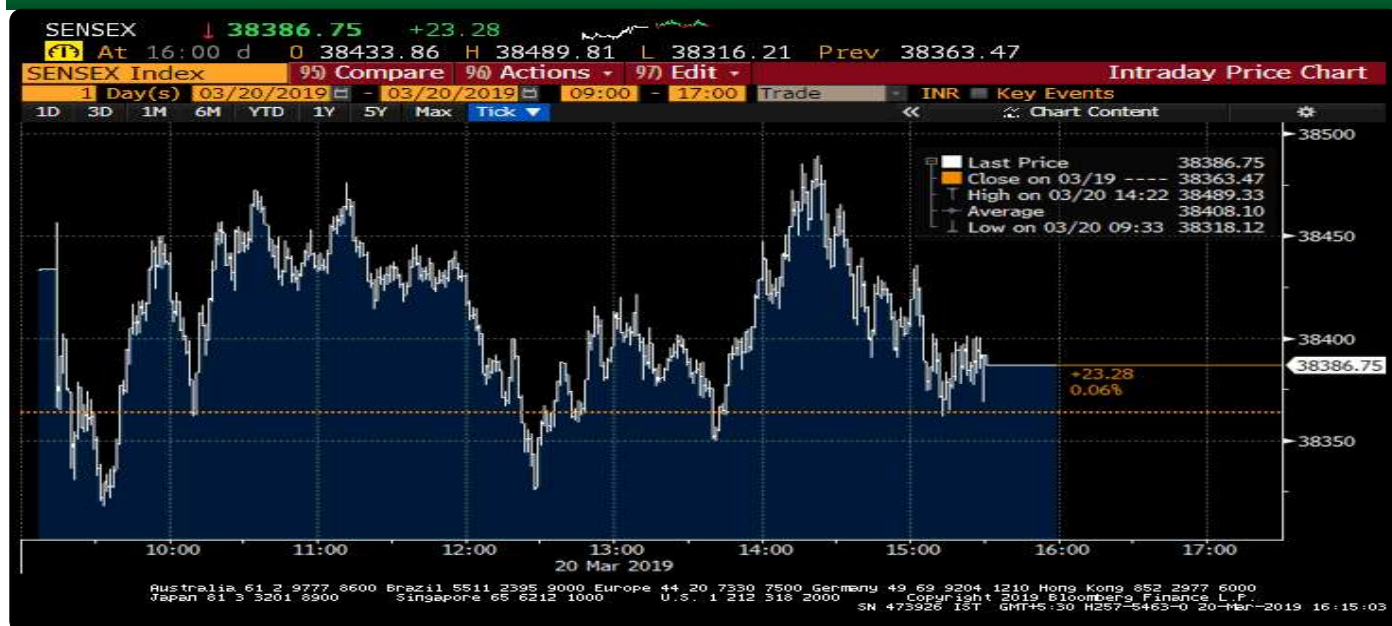
## Top Stock Drivers For The Day

Name	CMP	News/Views	Impact
		Following news came after market hours and are likely to react tomorrow:  No stock drivers for tomorrow	

Jaydeb Dey  
 Jaydeb.dey@smifs.com  
 Deepankar Saha  
 deepankar.saha@smifs.co.in

Contents	Page No.
Domestic News	4

## Intraday Chart of Sensex



## Market Turnover (In Crore) 20-03-2019

Name	Last	Previous
NSE Cash	35524.98	34191.11
NSE F&O	1885084.00	1070873.47
BSE Cash	2,899.79	9,188.94
BSE F&O	1.12	1.13

## NIFTY Top Gainers

Name	%1D	%5D	Day Vol	Avg 5 Day Vol
Indiabulls Finance	4.96	4.38	12,317,163	5,994,403
Hindalco I	2.37	2.4	8,788,334	5,658,157
Infosys	2.31	4.31	13,471,173	9,877,120
Wipro	1.59	1.42	6,114,562	6,245,951
Dr. Reddy'S	1.59	3.61	1,151,949	799,293

## NIFTY Top Losers

Name	%1D	%5D	Day Vol	Avg 5 Day Vol
ONGC	3.28	1.40	28,675,956	13,735,630
NTPC	4.19	4.66	28,098,992	20,243,060
BPCL	4.57	0.03	5,286,335	5,415,389
Zee Enterprise	4.84	1.25	8,926,752	6,483,061
HPCL	5.38	2.71	9,435,702	8,291,542

## Bulk and Block Deals

<https://www.nseindia.com/products/content/equities/equities/bulk.htm>

<http://www.bseindia.com/markets/equity/EQReports/BulknBlockDeals.aspx>

## FII Derivatives Flow (In Crore) 18-03-2019\*

Instrument	Purchase	Sale	Net
Index Future	3206.95	2919.41	287.54
Index Option	218092.77	217538.61	554.16
Stock Future	12351.11	12952.04	-600.93
Stock Option	8405.78	8371.82	33.96

## Institutional Flow (In Crore) 20-03-2019

Institution	Purchase	Sale	Net
FII	7252.39	5480.78	1771.61
DII	3319.03	4642.2	-1323.17

## Market in Retrospect

Indian equity benchmarks ended mixed after rallying for seven consecutive trading sessions, their longest gaining streak since December 2018. Sensex ended 0.06% or 23.28 points higher at 38,386.75, while the Nifty ended at 11,521.05, down 0.1%.

Nifty Realty was the top gainer, gaining by 2.43%. Nifty Media was the top loser, losing by 3.38%, followed by Nifty Auto which fell by 1.42%.

Indiabulls Housing Finance was the top gainer, gaining by 4.96%, followed by Hindalco & Infosys, followed by 2.37% & 2.31% respectively. HPCL was the top loser, losing by 5.38%, followed by Zee Entertainment & BPCL, which fell by 4.84% & 4.57% respectively.

The Advance Decline ratio stood at 667 : 1086.

\*Data not updated till 6 PM



## Indian Indices

Name	Index	Net Chng	%1D	%5D	%1M	%3M	%1Y
Sensex	38386.75	<b>23.28</b>	0.06	1.68	7.36	5.37	16.33
Nifty	11521.05	<b>11.35</b>	<b>0.10</b>	1.58	7.32	5.20	13.80
BSE M Cap	15165.72	<b>54.34</b>	<b>0.36</b>	0.25	8.39	<b>2.35</b>	<b>5.19</b>
BSE S Cap	14824.47	<b>48.89</b>	<b>0.33</b>	<b>0.34</b>	11.69	0.29	<b>13.77</b>
Nifty MC 100	17847.00	<b>89.95</b>	<b>0.50</b>	0.64	9.49	<b>0.79</b>	<b>5.25</b>
BSE Auto	19039.18	<b>271.70</b>	<b>1.41</b>	<b>3.49</b>	4.33	<b>11.28</b>	<b>21.16</b>
BSE Capgoods	18230.77	<b>86.78</b>	0.48	<b>0.33</b>	9.46	<b>3.57</b>	<b>1.07</b>
BSE FMCG	11730.87	<b>58.69</b>	<b>0.50</b>	<b>0.72</b>	4.19	<b>1.53</b>	14.30
BSE Metal	11185.09	<b>115.21</b>	<b>1.02</b>	0.37	7.74	<b>5.97</b>	<b>17.08</b>
BSE Oil&Gas	15001.12	<b>346.83</b>	<b>2.26</b>	1.79	11.90	8.47	2.62
BSE Healthcare	14280.44	<b>10.93</b>	0.08	1.29	6.74	2.72	6.22
BSE Power	1983.87	<b>30.94</b>	<b>1.54</b>	1.78	11.02	<b>0.79</b>	<b>7.15</b>
BSE Realty	2049.26	<b>44.23</b>	2.21	7.33	14.90	8.62	<b>11.25</b>
BSE ConsDur	23196.04	<b>3.61</b>	0.02	1.10	9.91	11.31	8.15
BSE Bank	33401.58	<b>9.48</b>	<b>0.03</b>	3.23	10.78	9.53	22.83
BSE IT	15266.16	<b>141.39</b>	0.93	2.04	1.11	6.99	24.83

## LME

Name	Index	Net Chng	%1D	%5D	%1M	%3M	%1Y
Gold(\$/Ounce)	1303.53	<b>3.13</b>	<b>0.24</b>	<b>0.44</b>	<b>2.61</b>	3.46	<b>0.59</b>
Silver(\$/Ounce)	15.31	<b>0.06</b>	<b>0.39</b>	<b>0.90</b>	<b>4.65</b>	3.70	<b>5.50</b>
Aluminium	1922.00	<b>22.50</b>	1.18	4.03	5.08	<b>0.29</b>	<b>6.95</b>
Copper	6469.00	<b>11.00</b>	0.17	<b>0.45</b>	1.97	7.99	<b>5.14</b>
Zinc	2850.00	<b>33.00</b>	1.17	<b>1.38</b>	6.32	9.43	<b>12.70</b>
Lead	2012.50	<b>8.25</b>	<b>0.41</b>	<b>2.61</b>	0.44	2.67	<b>14.80</b>

## Currency

Name	Rate	Net Chng	%1D	%5D	%1M	%3M	%1Y
INR	68.89	<b>0.07</b>	0.11	0.94	3.23	1.19	<b>5.36</b>
USD Index	96.45	<b>0.07</b>	0.07	<b>0.10</b>	0.00	0.19	6.73
YUAN	6.69	<b>0.02</b>	0.26	0.19	0.40	2.84	<b>5.38</b>
GBP	1.32	<b>0.00</b>	<b>0.32</b>	<b>0.85</b>	1.39	4.54	<b>5.48</b>
EUR	1.14	<b>0.00</b>	0.02	0.24	0.13	<b>0.81</b>	<b>7.26</b>
YEN	111.54	<b>0.15</b>	<b>0.13</b>	<b>0.33</b>	<b>0.62</b>	<b>0.23</b>	<b>4.49</b>

## Agro Commodities

Name	Price	Net Chng	%1D	%5D	%1M	%3M	%1Y
Coffee	96.70	<b>0.05</b>	0.05	<b>0.97</b>	<b>4.64</b>	<b>8.47</b>	<b>26.96</b>
Cotton	75.57	<b>0.08</b>	<b>0.11</b>	<b>0.20</b>	4.73	<b>1.18</b>	<b>3.31</b>
Sugar	12.74	<b>0.04</b>	<b>0.31</b>	3.07	<b>4.78</b>	1.92	<b>10.85</b>
Wheat	458.50	<b>2.00</b>	0.44	2.52	<b>5.32</b>	<b>13.65</b>	<b>13.90</b>
Soybean	902.75	<b>1.25</b>	<b>0.14</b>	0.19	<b>1.45</b>	<b>1.79</b>	<b>12.08</b>

## Global Indices (Updated at 4:30 pm)

Name	Index	Net Chng	%1D	%5D	%1M	%3M	%1Y
Dow Jones	25887.38	<b>26.72</b>	<b>0.10</b>	1.30	<b>0.26</b>	13.25	4.69
Nasdaq	7723.95	<b>9.47</b>	0.12	1.75	3.14	18.31	4.88
S&P 500	2832.57	<b>0.37</b>	<b>0.01</b>	1.47	1.72	14.80	4.26
FTSE100	7321.70	<b>3.88</b>	<b>0.05</b>	2.25	1.27	9.06	3.67
CAC40	5421.64	<b>3.87</b>	<b>0.07</b>	2.18	4.35	15.55	3.23
DAX	11648.76	<b>142.12</b>	<b>1.21</b>	0.64	2.14	9.76	<b>5.37</b>
Mexico IPC	42378.61	<b>168.15</b>	0.40	1.20	<b>1.85</b>	1.67	<b>9.98</b>
Brazil Bovespa	99588.38	<b>405.55</b>	<b>0.41</b>	1.80	3.15	16.79	18.33
Russian RTS	1220.28	<b>0.51</b>	0.04	2.62	2.17	12.63	<b>2.84</b>
Japan Nikkei	21608.92	<b>42.07</b>	0.20	1.50	0.83	5.96	1.07
Hang Seng	29320.97	<b>145.31</b>	<b>0.49</b>	1.78	2.83	14.43	<b>7.06</b>
Taiwan Index	10551.56	<b>39.24</b>	0.37	1.72	2.72	9.07	<b>4.17</b>
Shanghai Comp	3090.64	<b>0.34</b>	<b>0.01</b>	2.10	11.93	21.86	<b>6.08</b>
KOSPI	2177.10	<b>0.52</b>	<b>0.02</b>	1.34	<b>2.36</b>	5.68	<b>12.41</b>
Malaysia KLCI	1684.21	<b>3.47</b>	<b>0.21</b>	0.36	<b>2.43</b>	2.04	<b>9.27</b>
Jakarta Comp	6482.71	<b>2.43</b>	0.04	1.65	<b>0.46</b>	5.45	3.83
Philippine SE	7858.20	<b>14.79</b>	0.19	1.19	<b>1.02</b>	3.90	<b>2.50</b>
Thai Exch	1627.62	<b>2.47</b>	<b>0.15</b>	<b>0.73</b>	<b>1.08</b>	1.97	<b>9.57</b>

## Freight

Name	Index	Net Chng	%1D	%5D	%1M	%3M	%1Y
Baltic Dry	712.00	<b>9.00</b>	<b>1.25</b>	8.87	14.47	<b>45.98</b>	<b>36.54</b>
Baltic Dirty	715.00	<b>15.00</b>	<b>2.05</b>	<b>3.38</b>	<b>13.96</b>	<b>43.16</b>	10.85

## Energy Markets

Name	Index	Net Chng	%1D	%5D	%1M	%3M	%1Y
NYMEX Crude	58.68	<b>0.35</b>	<b>0.59</b>	0.72	3.09	27.90	<b>7.44</b>
BRENT Crude	67.47	<b>0.15</b>	<b>0.22</b>	<b>0.13</b>	0.49	22.28	6.88
Natural Gas	2.86	<b>0.02</b>	<b>0.59</b>	1.31	7.16	0.74	6.28

## Bond Markets

Name	Yield	Net Chng	%1D	%5D	%1M	%3M	%1Y
US	2.60	<b>0.02</b>	<b>0.62</b>	<b>0.96</b>	<b>1.84</b>	<b>7.50</b>	<b>10.35</b>
UK	1.18	<b>0.01</b>	<b>0.84</b>	<b>1.84</b>	<b>0.34</b>	<b>7.03</b>	<b>20.74</b>
Brazil	5.38	<b>0.01</b>	<b>0.11</b>	<b>1.00</b>	<b>0.07</b>	4.51	7.72
Japan	<b>0.04</b>	<b>0.00</b>	10.00	14.29	<b>9.09</b>	<b>233.33</b>	<b>183.72</b>
Australia	1.94	<b>0.00</b>	0.21	<b>1.27</b>	<b>7.76</b>	<b>17.29</b>	<b>28.26</b>
India	7.37	<b>0.01</b>	<b>0.12</b>	0.35	0.37	1.25	<b>3.31</b>
Switzerland	<b>0.31</b>	<b>0.01</b>	<b>2.00</b>	1.61	<b>5.88</b>	<b>32.47</b>	<b>455.81</b>
Germany	0.10	<b>0.01</b>	5.16	56.92	2.00	<b>55.26</b>	<b>82.56</b>

# News Impact

## Domestic News

### **PNB fraud case: Nirav Modi arrested in London on India's extradition request**

PNB fraud accused Nirav Modi was arrested by the Scotland Yard in London on Wednesday, more than a year after he escaped from India after defrauding Punjab National Bank (PNB) of INR14,356 crore. Senior officials familiar with the development said that Modi will now be produced in a London court, before the commencement of his extradition hearing. Nirav Modi's arrest came days after a London court issued an arrest warrant against him in response to a request by the Enforcement Directorate (ED) for his extradition in a money laundering case. The move comes as a big boost for India's agencies hunting Modi in connection with INR14,356 crore PNB fraud case. The Central Bureau of Investigation (CBI) had requested the UK authorities to detain Nirav Modi, with the UK confirming Modi's presence on its soil.

### **Vodafone Idea plans USD3.6 bn rights issue at sharp discount, shares tank**

Vodafone Idea Ltd approved INR25,000 crore (USD3.63 billion) rights issue at a sharp discount, sending its share prices tumbling. The Vodafone Idea rights issue is the second major fundraising by an Indian telco this year after Bharti Airtel Ltd announced a similar plan to reduce debt and fund operations in a market blighted by steep price competition. Shareholders will be able to buy 87 shares for every 38 shares held for an issue price of INR12.50 apiece. That will be around 60% discount to the current share prices. Indian telcos are trying to cut debt and shore up balance sheets at a time when the industry grapples with a prolonged price war triggered by the 2016 entry of Reliance Jio Infocomm Ltd. Market conditions also prompted Bharti Airtel to sell USD525 million worth of stock to Singapore Telecommunications Ltd (Singtel) under a plan to raise USD4.6 billion.

### **Lenders will make every effort to keep Jet Airways flying**

State Bank of India (SBI) chairman Rajnish Kumar said the lenders of Jet Airways will make every effort to keep the embattled airline flying. Banks were trying to work out a revival plan for Jet Airways through a change in management. The dialogue with Etihad is on. It is not that they have conclusively decided that they will go out. But there are certain conditions which they want to be fulfilled and it is nothing but that the airline should be professionally managed and without any interference. The Directorate General of Civil Aviation (DGCA) said only 41 aircraft of Jet Airways were currently available for operation and there could be further attrition of flights in the coming weeks.

# Events

## CORPORATE ACTION BONUS / RIGHTS / STOCK SPLIT / DIVIDEND / FCCB / M&A / WARRANTS ETC.

Company	Record Date	Ex-Date	Details
NMDC Ltd			Cash Dividend of INR5.52 effective 22/3/2019
ACC Ltd			Corporate Meeting effective 22/3/2019
UPL Ltd			Corporate Meeting effective 22/3/2019
Andhra Bank			Corporate Meeting effective 22/3/2019

## Domestic Events

- India's Foreign Exchange Reserve for the week ended March 15, 2019.

## Global Events

- March 21, 2019:** Euro Area Consumer Confidence Flash for March 2019., The U.S. Initial Jobless Claims for March 16, 2019.
- March 22, 2019:** The U.S. Existing Home Sales for February 2019., The U.S. Manufacturing PMI Flash for March 2019., Japan Inflation for February 2019., Japan Nikkei Manufacturing PMI Flash for March 2019., Euro Area Manufacturing PMI Flash for March 2019.

Source of News : The content may have been taken from The Economic Times, Business Standard, Business Line, Mint and other leading financial newspapers and financial portals BSE,NSE, Bloomberg, Moneycontrol & others.



## Disclaimer

Any document, including this report, which is prepared by the research team of Stewart & Mackertich Wealth Management Ltd. (SMIFS) is circulated for the purpose of information only to the intended recipient and should not be replicated or quoted or circulated to any person/corporate or legal entities in any form. This document/ documents/ reports/ opinion should not be interpreted as an Investment/ taxation/ legal advice. While the information contained in the report has been procured in good faith, from sources considered/ believed to be reliable, all/ part of the statement/ statements/ opinion/ opinions/ view/ views in the report may not be considered to be complete or accurate. Therefore, it should only be relied upon at the recipients own risk.

**Research Analysts/ Economists/ Advisors/ Investment Strategists or any other spokes persons of the company (SMIFS) are often sought after for expressing their views on print/ electronic/ web media. The views expressed are purely based on their assumption/ understanding on fundamental approach/ technical and historic facts on the subject. The views expressed should not be construed as an offer to buy/ sell or hold equity/ commodity/ currencies or their derivatives. The views/ opinions expressed is for information purpose only, and may change due to underlying factors, related or unrelated or other market conditions and may or may not be updated.**

Stewart & Mackertich Wealth Management Ltd, its subsidiaries, or any of its directors, employees, agents, and representatives shall not be liable for any damages whether direct or indirect, incidental, special or consequential including lost revenue or lost profits that may arise from or in connection with the use of the information/ research reports/ opinions expressed.

**Disclosure:** Clients/ associates of SMIFS Group may be holding positions in equities or their derivatives on which the research report is made or opinion is formed or views are expressed in print or electronic media. We ensure all compliance is adhered to with this report/ reports/ opinion or views expressed.

Analyst ownership of the stock – NIL

Analyst's dependent relatives' ownership in the stock – NIL

**Analyst Certification:** *The matter related to the report has been taken from sources believed reliable and the views expressed about the subject or issues in this report accurately reflect the personal views of the analyst/ analysts. Stewart & Mackertich Wealth Management Ltd. does not compensate partly or in full, directly or indirectly, related to specific recommendations or views expressed by the research analysts/ market strategists/ Portfolio Managers.*

REGISTRATION as required under SEBI (Research Analyst) Regulation 2014 has been granted by Securities & Exchange Board of India (SEBI), registration number being INH300001474.

Stewart & Mackertich Wealth Management Ltd.  
Vaibhav, 4 Lee Road, Kolkata 700020, West Bengal, India.  
Tel.: +91 33 3051 5408 / , Fax: 91 33 22893401

Website: [www.smifs.com](http://www.smifs.com)

For queries related to compliance of the report, please contact:

- Sudipto Datta, Compliance Officer

Contact No.: +91 33 30515414 / 4011 5414

Email Id.: [compliance@smifs.com](mailto:compliance@smifs.com) / [sudipta@smifs.com](mailto:sudipta@smifs.com)